



FlyBase 2.0

QuickSearch

Survey Questions May 2018



QuickSearch

The home page of FlyBase features QuickSearch which has a basic search tab and a variety of other tabs.

QuickSearch

Human Disease GAL4 etc Expression Phenotype References

Search FlyBase Orthologs Protein Domains Gene Groups GO Data Class

Enter text:

[?](#)

These other tabs allow targeted searches across many different biological domains within FlyBase such as human disease, orthology, GAL4 drivers, expression, etc.

1. Please indicate how useful you find each tab to be?

	Extremely useful	Very useful	Somewhat useful	Not so useful	Not at all useful
Data Class	<input type="radio"/>	<input type="radio"/>	<input type="radio"/>	<input type="radio"/>	<input type="radio"/>
Expression	<input type="radio"/>	<input type="radio"/>	<input type="radio"/>	<input type="radio"/>	<input type="radio"/>
GAL4 etc	<input type="radio"/>	<input type="radio"/>	<input type="radio"/>	<input type="radio"/>	<input type="radio"/>
Gene Groups	<input type="radio"/>	<input type="radio"/>	<input type="radio"/>	<input type="radio"/>	<input type="radio"/>
GO	<input type="radio"/>	<input type="radio"/>	<input type="radio"/>	<input type="radio"/>	<input type="radio"/>
Human Disease	<input type="radio"/>	<input type="radio"/>	<input type="radio"/>	<input type="radio"/>	<input type="radio"/>
Orthologs	<input type="radio"/>	<input type="radio"/>	<input type="radio"/>	<input type="radio"/>	<input type="radio"/>
Phenotype	<input type="radio"/>	<input type="radio"/>	<input type="radio"/>	<input type="radio"/>	<input type="radio"/>
Protein Domains	<input type="radio"/>	<input type="radio"/>	<input type="radio"/>	<input type="radio"/>	<input type="radio"/>
References	<input type="radio"/>	<input type="radio"/>	<input type="radio"/>	<input type="radio"/>	<input type="radio"/>
Search	<input type="radio"/>	<input type="radio"/>	<input type="radio"/>	<input type="radio"/>	<input type="radio"/>

2. Please indicate how often you use each tab.

	Extremely often	Very often	Somewhat often	Not often	Not at all
Data Class	<input type="radio"/>	<input type="radio"/>	<input type="radio"/>	<input type="radio"/>	<input type="radio"/>
Expression	<input type="radio"/>	<input type="radio"/>	<input type="radio"/>	<input type="radio"/>	<input type="radio"/>
GAL4 etc	<input type="radio"/>	<input type="radio"/>	<input type="radio"/>	<input type="radio"/>	<input type="radio"/>
Gene Groups	<input type="radio"/>	<input type="radio"/>	<input type="radio"/>	<input type="radio"/>	<input type="radio"/>
GO	<input type="radio"/>	<input type="radio"/>	<input type="radio"/>	<input type="radio"/>	<input type="radio"/>
Human Disease	<input type="radio"/>	<input type="radio"/>	<input type="radio"/>	<input type="radio"/>	<input type="radio"/>
Orthologs	<input type="radio"/>	<input type="radio"/>	<input type="radio"/>	<input type="radio"/>	<input type="radio"/>
Phenotype	<input type="radio"/>	<input type="radio"/>	<input type="radio"/>	<input type="radio"/>	<input type="radio"/>
Protein Domains	<input type="radio"/>	<input type="radio"/>	<input type="radio"/>	<input type="radio"/>	<input type="radio"/>
References	<input type="radio"/>	<input type="radio"/>	<input type="radio"/>	<input type="radio"/>	<input type="radio"/>
Search	<input type="radio"/>	<input type="radio"/>	<input type="radio"/>	<input type="radio"/>	<input type="radio"/>

3. For tabs that you think are not useful or tabs you don't use, which of the following best describes the reason why?

	Didn't know about it	Doesn't fit my needs or interests	Too complicated	Not applicable
Data Class	<input type="radio"/>	<input type="radio"/>	<input type="radio"/>	<input type="radio"/>
Expression	<input type="radio"/>	<input type="radio"/>	<input type="radio"/>	<input type="radio"/>
GAL4 etc	<input type="radio"/>	<input type="radio"/>	<input type="radio"/>	<input type="radio"/>
Gene Groups	<input type="radio"/>	<input type="radio"/>	<input type="radio"/>	<input type="radio"/>
GO	<input type="radio"/>	<input type="radio"/>	<input type="radio"/>	<input type="radio"/>
Human Disease	<input type="radio"/>	<input type="radio"/>	<input type="radio"/>	<input type="radio"/>
Orthologs	<input type="radio"/>	<input type="radio"/>	<input type="radio"/>	<input type="radio"/>
Phenotype	<input type="radio"/>	<input type="radio"/>	<input type="radio"/>	<input type="radio"/>
Protein Domains	<input type="radio"/>	<input type="radio"/>	<input type="radio"/>	<input type="radio"/>
References	<input type="radio"/>	<input type="radio"/>	<input type="radio"/>	<input type="radio"/>
Search	<input type="radio"/>	<input type="radio"/>	<input type="radio"/>	<input type="radio"/>



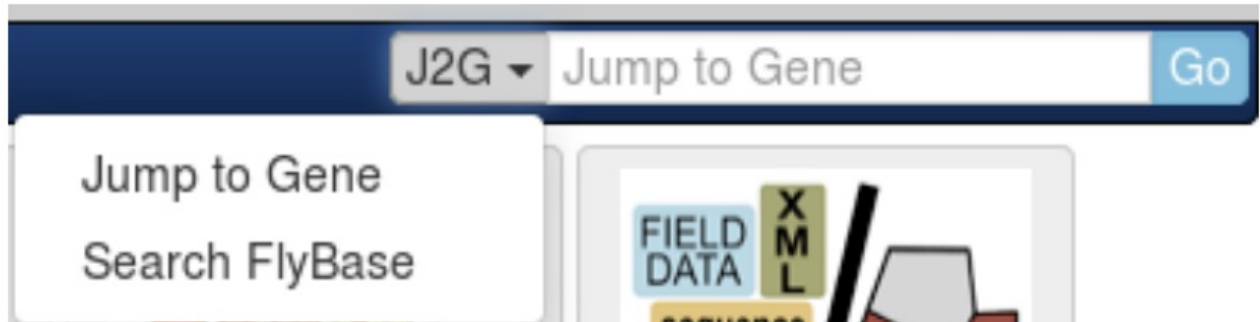
4. FlyBase currently provides recent updates for all our data class reports via an RSS link in the top right of each report.



The RSS feed provides information about newly added connections between the report and other related entities for each release. For example, a new publication added to an allele or a new construct associated with a gene. Which of the following best represents your opinion of this feature.

- I like this feature and find it very useful.
- I didn't know about the RSS feeds but it seems like something I could use.
- I'd like to get updates but would prefer to get them as occasional emails.
- I don't care about updates.
- Other (please specify)

5. The Jump to Gene tool in FlyBase was recently modified to offer two modes of operation.



The first mode is "Jump to Gene", it allows for quick report navigation via gene symbol or ID. The second mode is "Search", it searches across all of FlyBase and always returns a HitList. Only the first mode was offered previously. Which of the following best represents your opinion of this feature.

- I like this feature and think it is a useful improvement over the previous version.
- I would like to see additional search options added for more control over the results displayed (Genes, Alleles, Stocks, Insertions, References, etc.).
- I prefer the previous version with a single mode of operation for navigation (Jump to Gene only).
- I prefer a single input box that only searches across all of FlyBase.

6. FlyBase currently provides BLAST databases for a wide variety of *Drosophila*, non *Drosophila* *Dipterans* (house fly, tsetse fly, mosquitoes, etc.), *Lepidoptera* (silkworm and monarch butterfly), *Coleoptera* (red flour beetle), *Hymenoptera* (ants, bees, wasps, etc.), *Hemiptera* (pea aphid and kissing bug), *Phthiraptera* (human body louse), and *Ixodida* (ticks). Please select the orders that you use with FlyBase BLAST (select all that apply).

Dipterans (*Drosophila*, house fly, tsetse fly, mosquitoes, etc.)

Lepidoptera (silkworm and monarch butterfly)

Coleoptera (red flour beetle)

Hymenoptera (ants, bees, wasps, etc.)

Hemiptera (pea aphid and kissing bug)

Phthiraptera (human body louse)

Ixodida (ticks)

I don't use FlyBase BLAST



IT devices and Apps

7. When using a tablet or phone on the new site which of the following best represents your opinion.

- FlyBase on a tablet or phone is reasonably easy to use.
- FlyBase on a tablet or phone is usable but could be improved.
- FlyBase on a tablet or phone is difficult to use.
- I don't use a tablet or phone when using FlyBase.

8. Which statement best represents your reason for choosing a browser, tablet, or phone when using FlyBase.

- I use whatever is most convenient for me at that time.
- I use whatever I work most efficiently in.
- I use whatever seems to work best with FlyBase.

9. Please indicate your opinion of the following statement:

A FlyBase Android / iOS app for basic searching and browsing of FlyBase data would be very useful.

- Strongly agree
- Somewhat agree
- Not sure
- Somewhat disagree
- Strongly disagree

10. Additional comments and suggestions:



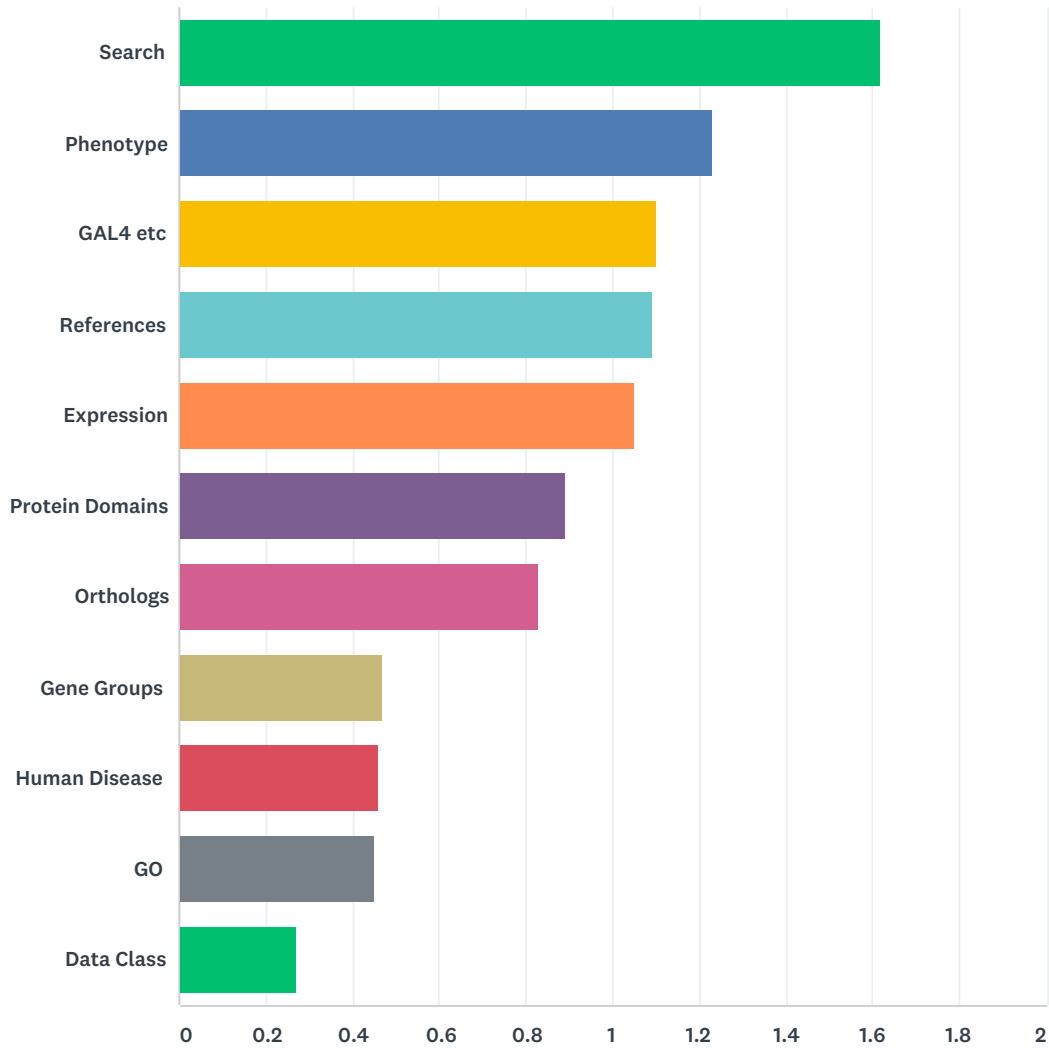
FlyBase 2.0

QuickSearch

Survey Answers May 2018

Q1 Please indicate how useful you find each tab to be?

Answered: 174 Skipped: 1



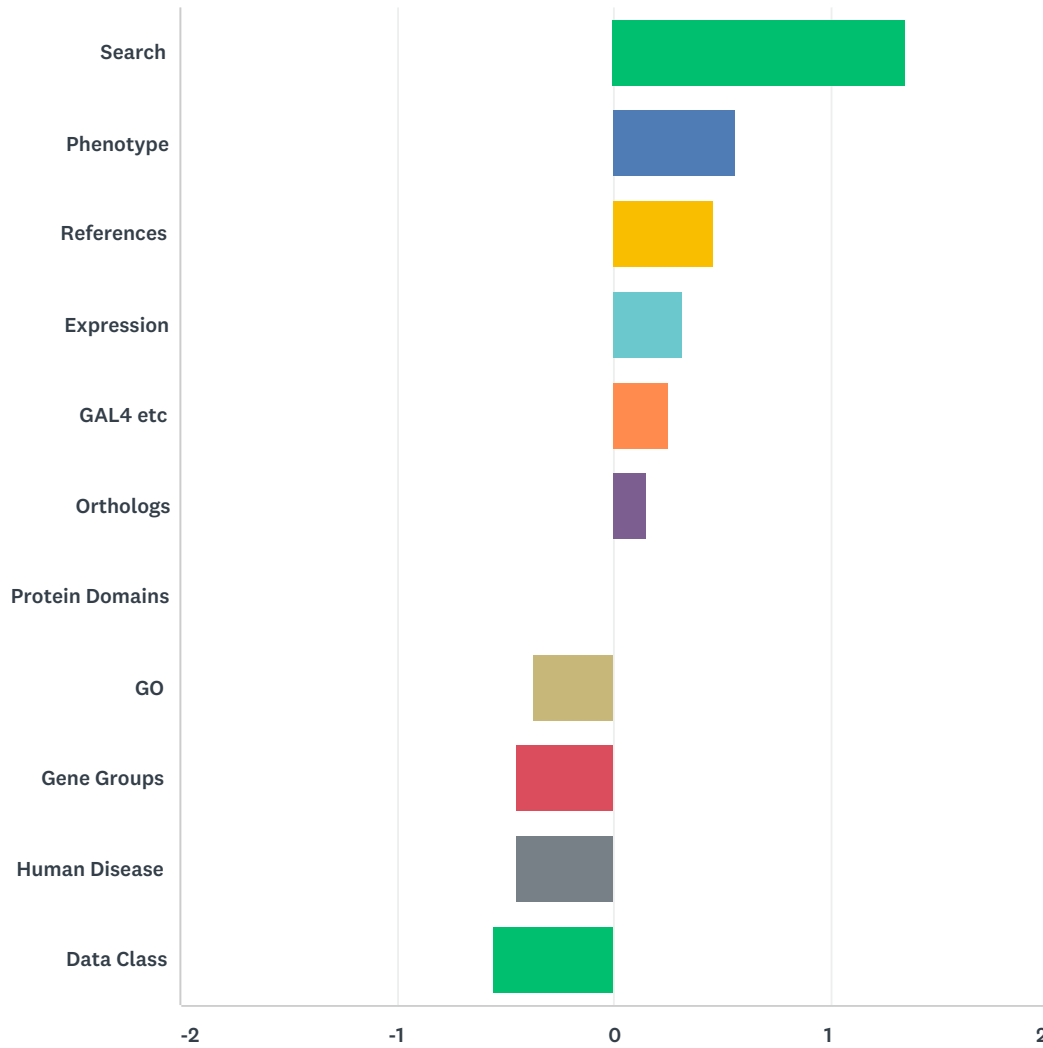
	EXTREMELY USEFUL	VERY USEFUL	SOMEWHAT USEFUL	NOT SO USEFUL	NOT AT ALL USEFUL	TOTAL	WEIGHTED AVERAGE
Search	74.85% 125	16.17% 27	5.99% 10	1.80% 3	1.20% 2	167	1.62
Phenotype	53.66% 88	26.83% 44	12.80% 21	2.44% 4	4.27% 7	164	1.23
GAL4 etc	42.26% 71	35.12% 59	16.67% 28	1.79% 3	4.17% 7	168	1.10
References	47.31% 79	28.74% 48	12.57% 21	8.38% 14	2.99% 5	167	1.09
Expression	44.31% 74	28.14% 47	19.16% 32	4.79% 8	3.59% 6	167	1.05
Protein Domains	33.94% 56	36.97% 61	17.58% 29	7.27% 12	4.24% 7	165	0.89

FlyBase 2.0

Orthologs	31.93% 53	33.73% 56	23.49% 39	6.63% 11	4.22% 7	166	0.83
Gene Groups	20.00% 32	26.88% 43	38.13% 61	10.00% 16	5.00% 8	160	0.47
Human Disease	20.73% 34	27.44% 45	33.54% 55	13.41% 22	4.88% 8	164	0.46
GO	20.86% 34	29.45% 48	30.06% 49	13.50% 22	6.13% 10	163	0.45
Data Class	25.32% 40	18.35% 29	24.68% 39	21.52% 34	10.13% 16	158	0.27

Q2 Please indicate how often you use each tab.

Answered: 174 Skipped: 1



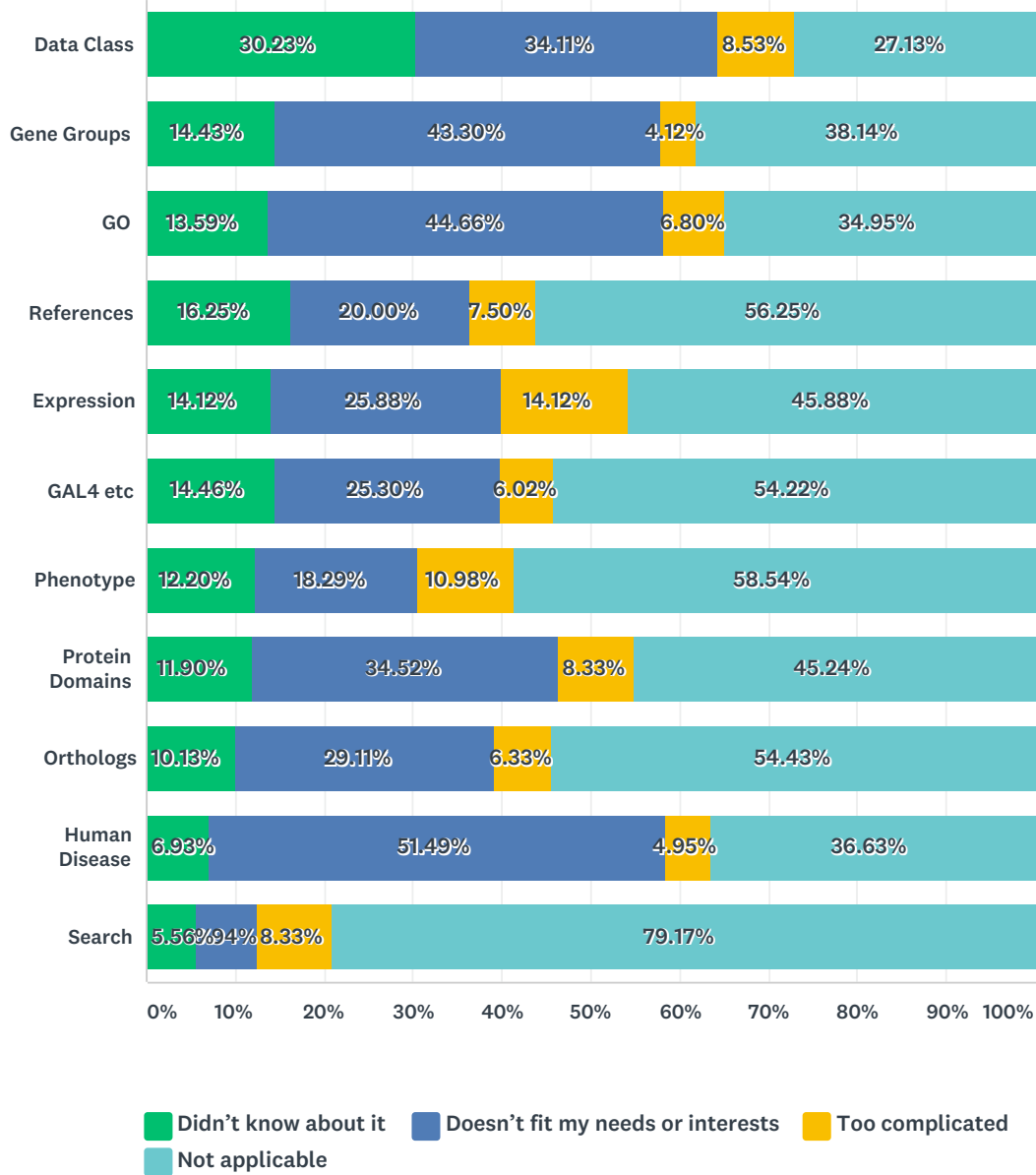
	EXTREMELY OFTEN	VERY OFTEN	SOMEWHAT OFTEN	NOT OFTEN	NOT AT ALL	TOTAL	WEIGHTED AVERAGE
Search	66.07% 111	17.26% 29	6.55% 11	5.95% 10	4.17% 7	168	1.35
Phenotype	34.52% 58	26.79% 45	12.50% 21	12.50% 21	13.69% 23	168	0.56
References	30.41% 52	26.90% 46	13.45% 23	16.37% 28	12.87% 22	171	0.46
Expression	22.81% 39	30.41% 52	17.54% 30	14.62% 25	14.62% 25	171	0.32
GAL4 etc	18.82% 32	28.82% 49	23.53% 40	16.47% 28	12.35% 21	170	0.25
Orthologs	19.88% 33	22.89% 38	21.69% 36	23.49% 39	12.05% 20	166	0.15

FlyBase 2.0

Protein Domains	16.67% 28	23.21% 39	20.24% 34	23.21% 39	16.67% 28	168	0.00
GO	7.36% 12	21.47% 35	20.25% 33	28.22% 46	22.70% 37	163	-0.37
Gene Groups	6.67% 11	15.76% 26	24.85% 41	32.73% 54	20.00% 33	165	-0.44
Human Disease	9.04% 15	13.25% 22	25.30% 42	29.52% 49	22.89% 38	166	-0.44
Data Class	13.94% 23	12.73% 21	15.15% 25	21.21% 35	36.97% 61	165	-0.55

Q3 For tabs that you think are not useful or tabs you don't use, which of the following best describes the reason why?

Answered: 147 Skipped: 28



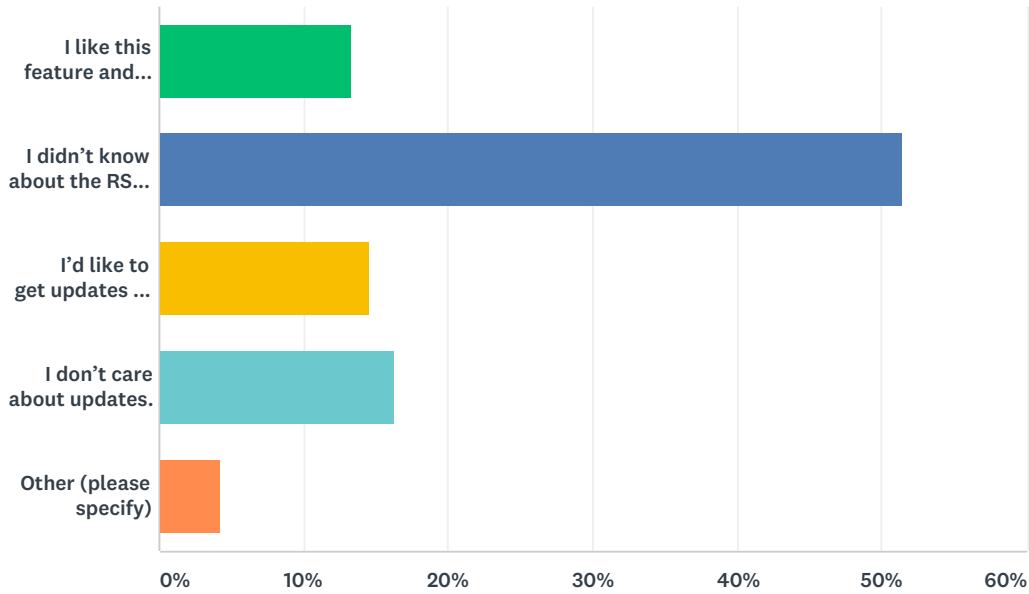
	DIDN'T KNOW ABOUT IT	DOESN'T FIT MY NEEDS OR INTERESTS	TOO COMPLICATED	NOT APPLICABLE	TOTAL
Data Class	30.23% 39	34.11% 44	8.53% 11	27.13% 35	129
Gene Groups	14.43% 14	43.30% 42	4.12% 4	38.14% 37	97
GO	13.59% 14	44.66% 46	6.80% 7	34.95% 36	103
References	16.25% 13	20.00% 16	7.50% 6	56.25% 45	80

FlyBase 2.0

Expression	14.12% 12	25.88% 22	14.12% 12	45.88% 39	85
GAL4 etc	14.46% 12	25.30% 21	6.02% 5	54.22% 45	83
Phenotype	12.20% 10	18.29% 15	10.98% 9	58.54% 48	82
Protein Domains	11.90% 10	34.52% 29	8.33% 7	45.24% 38	84
Orthologs	10.13% 8	29.11% 23	6.33% 5	54.43% 43	79
Human Disease	6.93% 7	51.49% 52	4.95% 5	36.63% 37	101
Search	5.56% 4	6.94% 5	8.33% 6	79.17% 57	72

Q4 FlyBase currently provides recent updates for all our data class reports via an RSS link in the top right of each report. The RSS feed provides information about newly added connections between the report and other related entities for each release. For example, a new publication added to an allele or a new construct associated with a gene. Which of the following best represents your opinion of this feature.

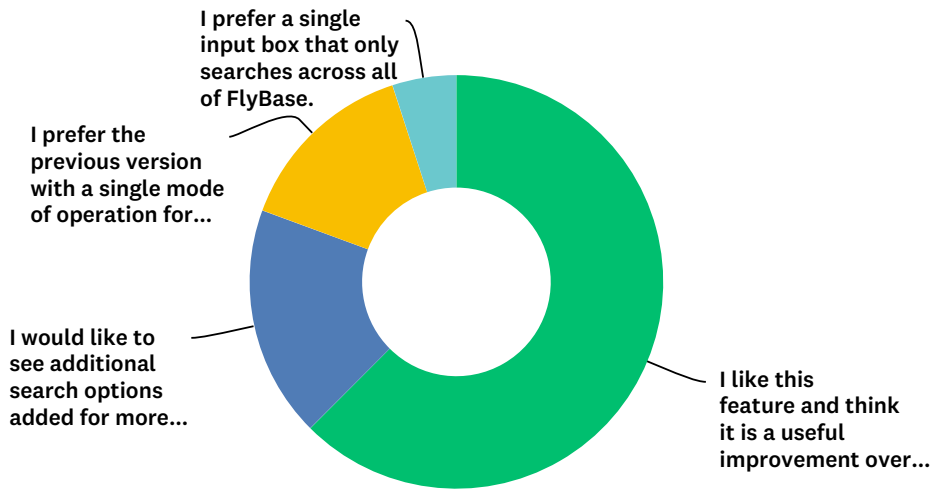
Answered: 165 Skipped: 10



ANSWER CHOICES	RESPONSES	
I like this feature and find it very useful.	13.33%	22
I didn't know about the RSS feeds but it seems like something I could use.	51.52%	85
I'd like to get updates but would prefer to get them as occasional emails.	14.55%	24
I don't care about updates.	16.36%	27
Other (please specify)	4.24%	7
TOTAL		165

Q5 The Jump to Gene tool in FlyBase was recently modified to offer two modes of operation. The first mode is “Jump to Gene”, it allows for quick report navigation via gene symbol or ID. The second mode is “Search”, it searches across all of FlyBase and always returns a HitList. Only the first mode was offered previously. Which of the following best represents your opinion of this feature.

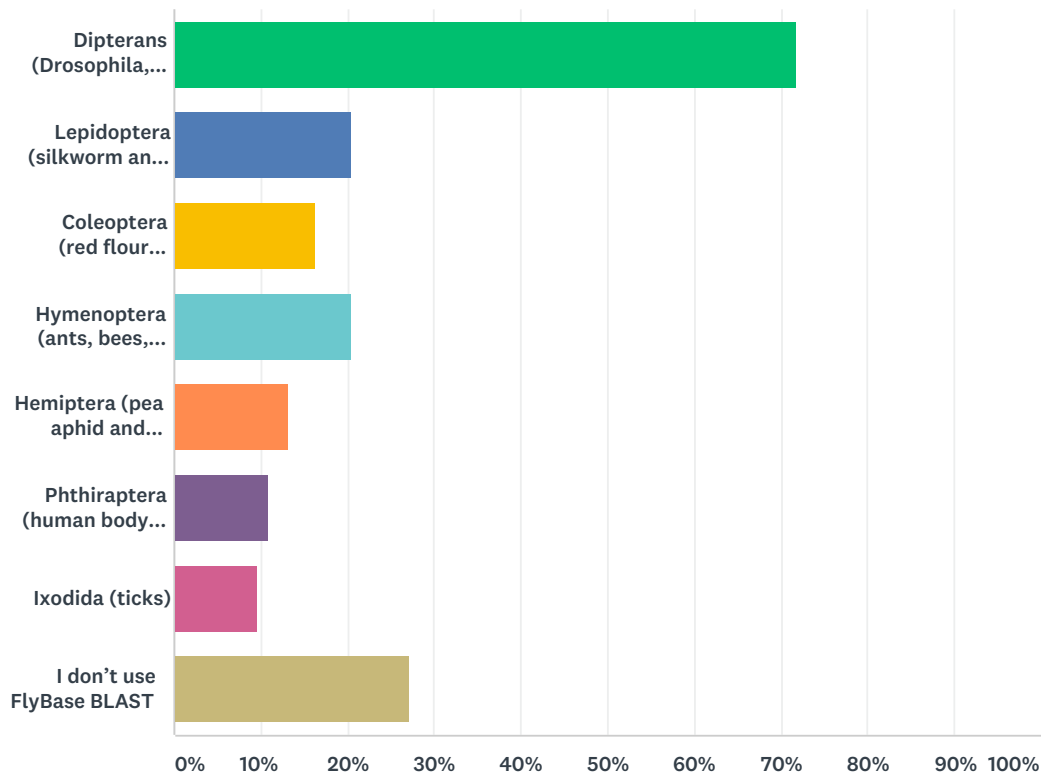
Answered: 160 Skipped: 15



ANSWER CHOICES	RESPONSES
I like this feature and think it is a useful improvement over the previous version.	62.50% 100
I would like to see additional search options added for more control over the results displayed (Genes, Alleles, Stocks, Insertions, References, etc.).	18.13% 29
I prefer the previous version with a single mode of operation for navigation (Jump to Gene only).	14.37% 23
I prefer a single input box that only searches across all of FlyBase.	5.00% 8
TOTAL	160

Q6 FlyBase currently provides BLAST databases for a wide variety of *Drosophila*, non *Drosophila* Dipterans (house fly, tsetse fly, mosquitoes, etc.), Lepidoptera (silkworm and monarch butterfly), Coleoptera (red flour beetle), Hymenoptera (ants, bees, wasps, etc.), Hemiptera (pea aphid and kissing bug), Phthiraptera (human body louse), and Ixodida (ticks). Please select the orders that you use with FlyBase BLAST (select all that apply).

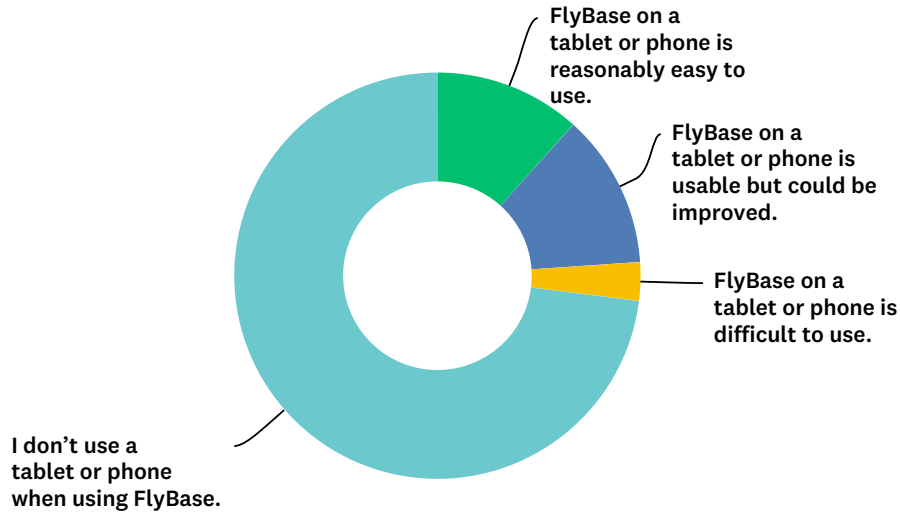
Answered: 166 Skipped: 9



ANSWER CHOICES	RESPONSES	
Dipterans (Drosophila, house fly, tsetse fly, mosquitoes, etc.)	71.69%	119
Lepidoptera (silkworm and monarch butterfly)	20.48%	34
Coleoptera (red flour beetle)	16.27%	27
Hymenoptera (ants, bees, wasps, etc.)	20.48%	34
Hemiptera (pea aphid and kissing bug)	13.25%	22
Phthiraptera (human body louse)	10.84%	18
Ixodida (ticks)	9.64%	16
I don't use FlyBase BLAST	27.11%	45
Total Respondents: 166		

Q7 When using a tablet or phone on the new site which of the following best represents your opinion.

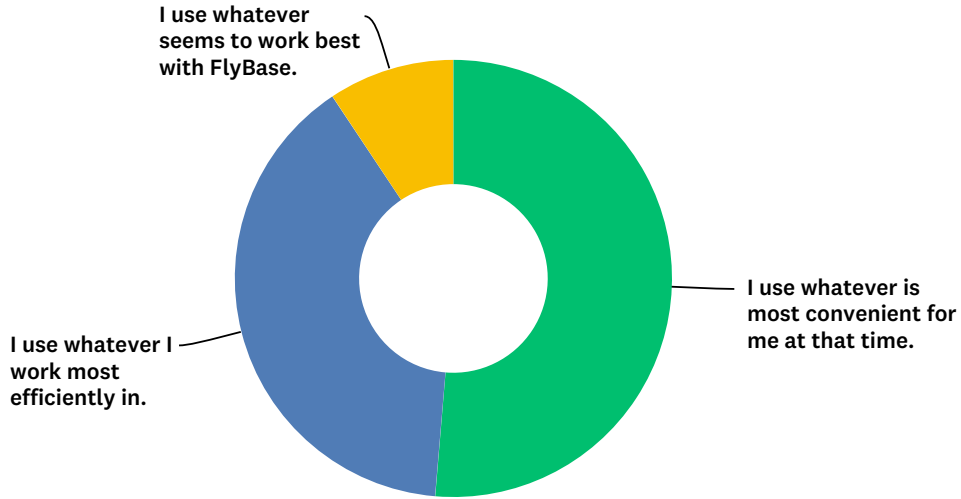
Answered: 163 Skipped: 12



ANSWER CHOICES	RESPONSES	
FlyBase on a tablet or phone is reasonably easy to use.	11.66%	19
FlyBase on a tablet or phone is usable but could be improved.	12.27%	20
FlyBase on a tablet or phone is difficult to use.	3.07%	5
I don't use a tablet or phone when using FlyBase.	73.01%	119
TOTAL		163

Q8 Which statement best represents your reason for choosing a browser, tablet, or phone when using FlyBase.

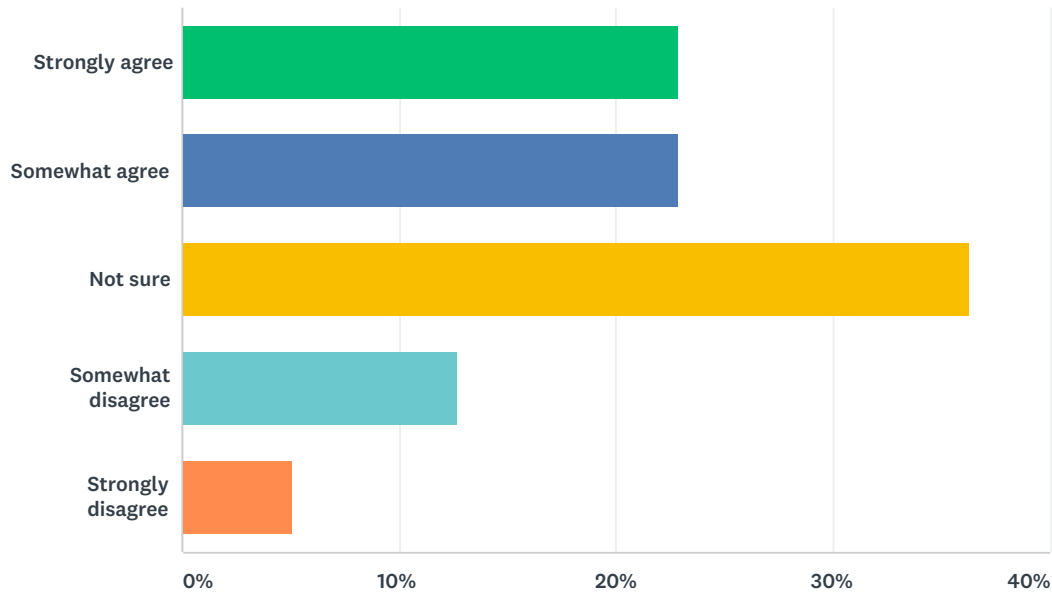
Answered: 150 Skipped: 25



ANSWER CHOICES	RESPONSES	
I use whatever is most convenient for me at that time.	51.33%	77
I use whatever I work most efficiently in.	39.33%	59
I use whatever seems to work best with FlyBase.	9.33%	14
TOTAL		150

Q9 Please indicate your opinion of the following statement: A FlyBase Android / iOS app for basic searching and browsing of FlyBase data would be very useful.

Answered: 157 Skipped: 18



ANSWER CHOICES	RESPONSES	
Strongly agree	22.93%	36
Somewhat agree	22.93%	36
Not sure	36.31%	57
Somewhat disagree	12.74%	20
Strongly disagree	5.10%	8
TOTAL		157

Q10 Additional comments and suggestions:

Answered: 31 Skipped: 144